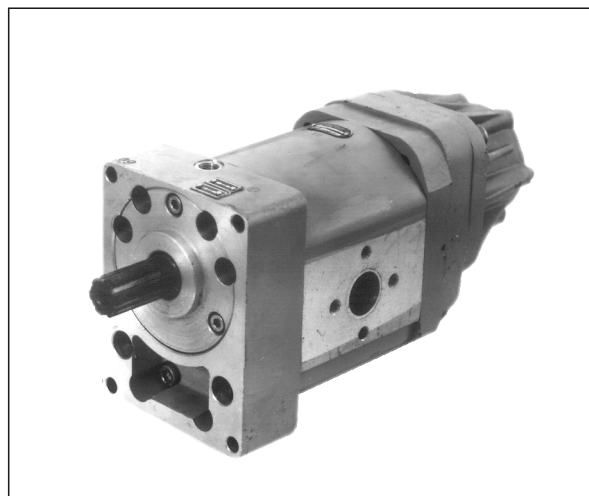


prva desetletka  
HYDRAULICS

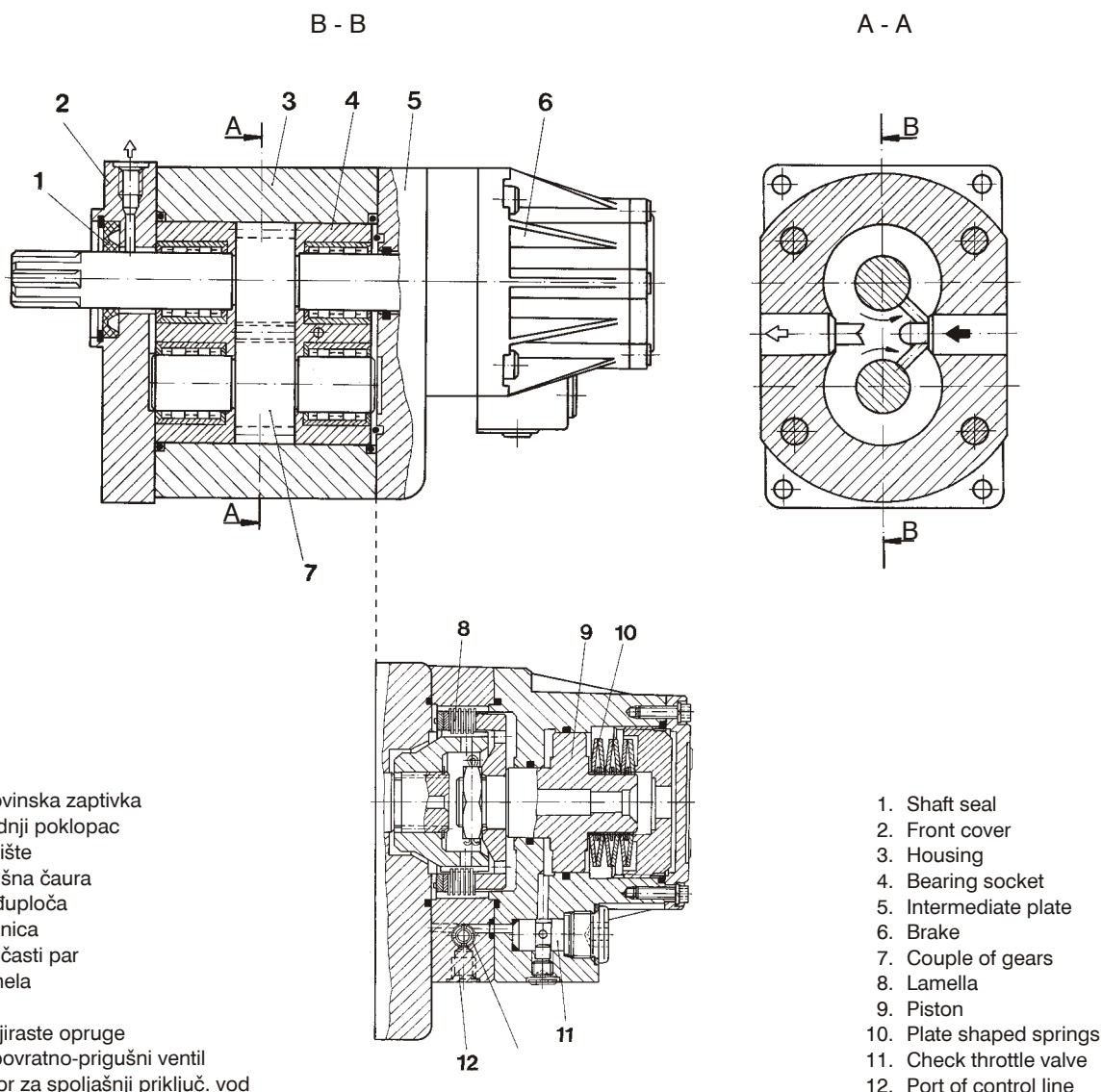
# Zupčasti motori 3125 - sa kočnicom Gear motors 3125 - with brake

VISOKOG PRITISKA, SA SPOLJAŠNJIM OZUBLJENJEM  
HIGH PRESSURE, WITH OUTER GEARING

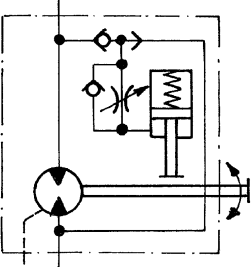
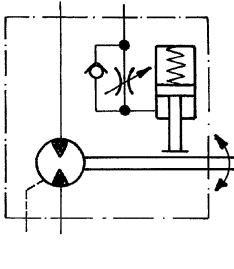
- Varijanta zupčastog motora - standard sa ugrađenom lamelastom kočnicom
  - Veliki obrtni moment
  - Specijalno uležištenje zupčanika
  - Jednostavna i robusna konstrukcija uz male gabarite
  - Automatska regulacija aksijalnog zazora
  - Dobar stepen korisnog dejstva, praktično nepromenljiv u deklarisanom području broja obrtaja i pritiska
  - Velika otpornost lamela na habanje - veliki broj ciklusa kočenja bez zamene
- Standard gear motor with multiple brake
  - High torque
  - Special bearings
  - Simple and robust construction, with small overall dimensions
  - Automatic regulation of axial clearance
  - High efficiency which is practically constant within the declared speed and pressure
  - High durability brake lamellas - many braking without exchange
  - After action of hydraulic fluid has been ceased, motor remain in



## PRESEK - PRINCIP RADA SECTION - MODE OF OPERATION



**TEHNIČKE KARAKTERISTIKE**  
**TECHNICAL DATA**

Oznaka Designation	3125.455.99U	3125.455.99	3125.455.88	3125.479.99
Symbol Symbol	 unutrašnje upravljanje internal control line		 spoljašnje upravljanje external control line	
Priključivanje vodova Line connection	prirubicama by flanges			
Smer obrtanja Rotation direction	levi i desni (dvosmerni) anticlockwise and clockwise (both-direction)			
Položaj ugradnje Mounting position	proizvoljan optional			
Temperatura okoline (°C) Ambient temperature	-20 ... +40			
Finoća filtriranja ( m) Filtering fineness	25 ... 150			
Pritisak u drenažnom vodu (bar) Drain line pressure	1			
Radna tečnost Working fluid	mineralno ulje mineral oil			
	viskozitet (mm <sup>2</sup> /s) viscosity			
	temperatura (°C) temperature			
		optimalni: optimal:		16 ... 90 / kratko pri startu: intermittent for starting: 800
				-20 ... +80

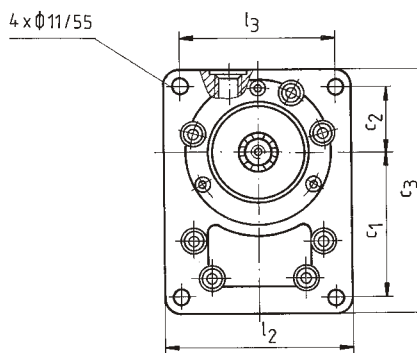
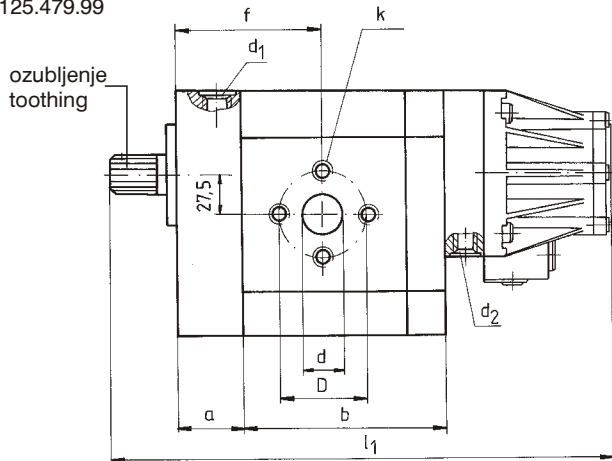
oznaka designation		radna zapremina displacement (cm <sup>3</sup> )	moment/ torque (at p=160 bar)		pritisak pressure		broj obrtaja speed			masa mass (kg)
veličina size	dvosmerni both-direction		obrtni drive	kočni brake	nom.	max	min	nom.	max	
		(daNm)		(bar)		(min <sup>-1</sup> ) (rpm)				
*	3125.479.99	42,0	10,698	0 ... 20						
*	3125.455.99	75,3	19,175	0 ... 20	160	200	500	1500	2500	
*	3125.455.99U									
*	3125.455.88									

\* Motori sa ležajem u prednjem poklopcu  
Motors with the bearing located in the front cover

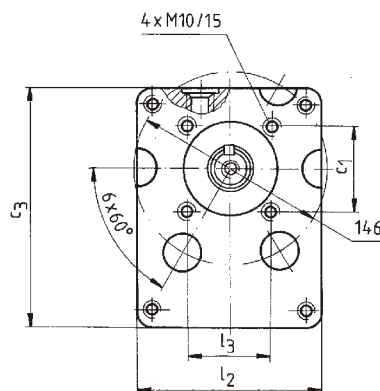
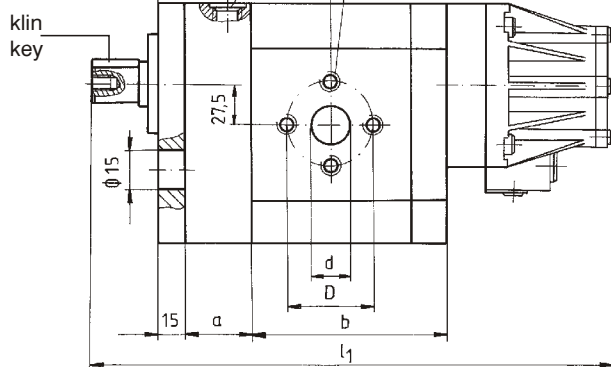
**UGRADNI CRTEŽ** (mere u mm)  
**MOUNTING DRAWING** (dimensions in mm)

VELIČINA V  
 SIZE V

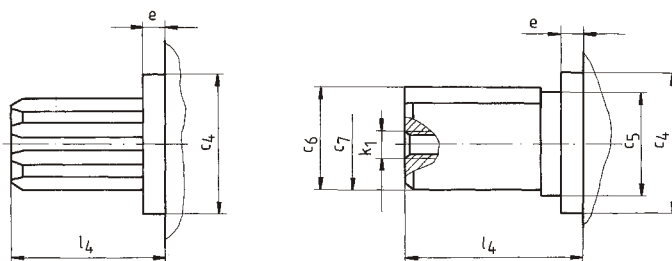
3125.479.99



3125.455.99  
 3125.455.99U  
 3125.455.88



Size	oznaka designation	rad. zapremina displacement (cm <sup>3</sup> )	a	b	c1	c2	c3	L1	L2	L3	f	ulaz (izlaz) inlet (outlet)			drenaž drainage d1	upravljanje control d2
												Ød	ØD	K		
V	3125.479.99	42,0	140	157	107,5	52,5	181	327	140	120	111	25	50	M10/18	M14/1,5	M16x1,5
	3125.455.99	75,3						344				119,5	32			
	3125.455.99U		344	119,5												
	3125.455.88		360		71	134,5										



Size	oznaka designation	e	ØC4	ØC5	C6	ØC7	L4	K1	ozubljenje tothing DIN 5463	klin key JUS M.C2.062
V	3125.479.99	8	60h6	-	-	-	63	-	B6x23x28 23f7x28a11x6e8	-
	3125.455.99									
	3125.455.99U									
	3125.455.88	6	80h6	25	26,9	24,6	51	M8/16	-	A8x7x40

**B**