

prva desetletka
HYDRAULICS

Zupčaste pumpe za teška goriva Heavy oil burner gear pumps

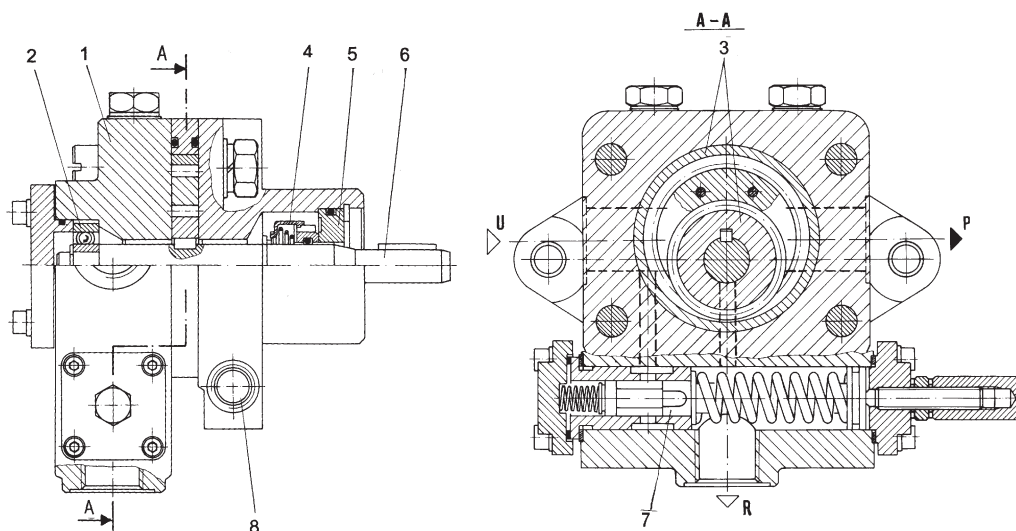
NISKOG PRITISKA, SA UNUTRAŠNJIM OZUBLJENJEM
LOW PRESSURE, WITH INTERNAL GEARING

- Pumpe su primenljive za dovod goriva kod plamenika toplotnih agregata (kotlovi za centralno grejanje, zagrejači vazduha, pekarske peći, sušionice i dr.)
- Mali kompaktni uređaj koji sadrži zupčasti par i ventil za ograničenje pritiska.
- Specifičnost ove konstrukcije je poseban način čeonog zaptivanja pogonskog vratila
- Ostvaren je dobar hidraulički stepen korisnog dejstva zahvaljujući preciznoj i kvalitetnoj obradi delova
- U prednjem poklopcu pumpe predviđen je navojni otvor za ugradnju grejača za zagrevanje pumpe pre startovanja (grejač se ne isporučuje)
- Miran rad-neznatna buka

- The pumps are applied in light oil circuit to deliver oil to the oil burner
- Compact design and small overall dimensions
- Drive shaft with special sealing
- High efficiency is achieved owing to the accurate fabrication and to high-quality machining
- Front cover is supplied with port for pump heater (heating before start of the pump). Heater are not included delivered
- Quiet operation and low noise level



PRESEK - PRINCIP RADA SECTION - MODE OF OPERATION

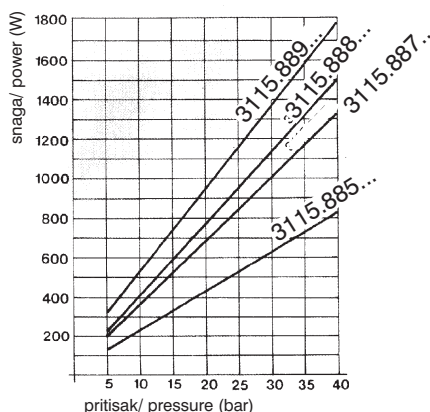
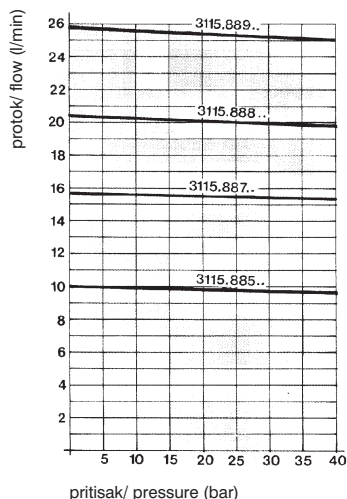


1. Kućište
2. Ležaj
3. Zupčasti par
4. Osovin.zaptivka-sklop
5. Poklopac
6. Pogonsko vratilo
7. Ventil za ograničenje pritiska
8. Otvor za grejač

1. Housing
2. Bearing
3. Couple of gears
4. Shaft seal - assembly
5. Cover
6. Driving shaft
7. Pressure relief valve
8. Heater port

KARAKTERISTIČNI DIJAGRAMI CHARACTERISTIC DIAGRAMS

(za radnu tečnost, za nazivni broj obrtaja i za radnu temperaturu)
(for working fluid, for nominal speed and working temperature)



OZNAČAVANJE DESIGNATION

3115. * - *

smjer obrtanja :
rotation direction :

41 = levi
anticlockwise

42 = desni
clockwise

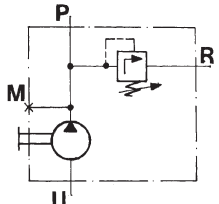
protok :
flow :

885 = 8 l/min
887 = 12,5 l/min
888 = 16 l/min
889 = 20 l/min

A

TEHNIČKE KARAKTERISTIKE
TECHNICAL DATA

 OPŠTE
 GENERAL

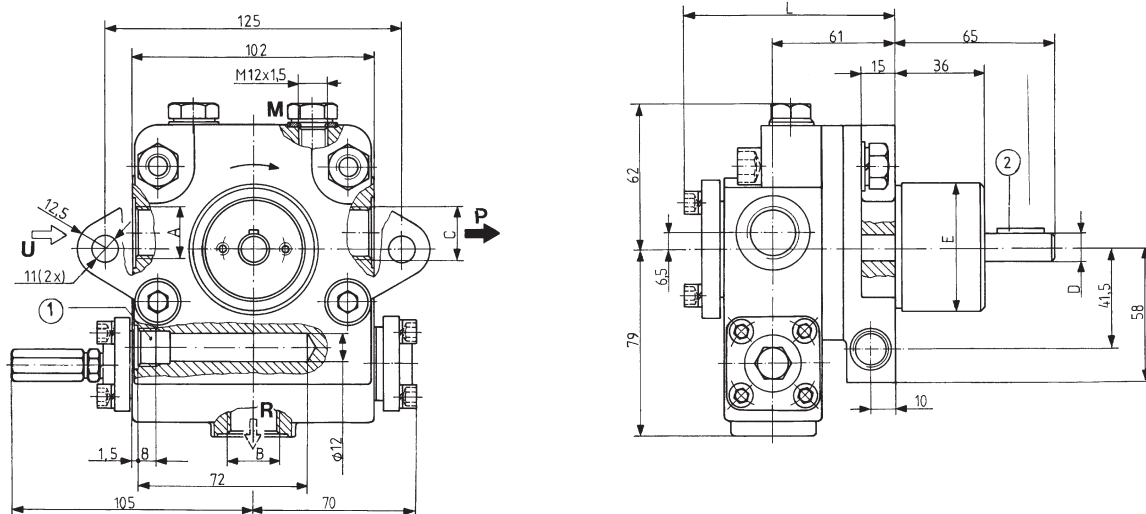
Simbol Symbol				
Smer obrtanja Rotation direction	levi ili desni anticlockwise or clockwise			
Položaj ugradnje Mounting position	proizvoljan optional			
Način pogona Driving mode	obrnim momentom (radijalne i aksijalne sile nisu dozvoljene) by torque (radial and axial forces are not permissible)			
Temperatura okoline (°C) Ambient temperature	... + 50			
Masa (kg) Mass	6	6,3	6,6	7

HIDRAULIČKE
HYDRAULIC

Nazivni protok (l/min) Nominal flow	8	12,5	16	20
Pritisak (bar) Pressure	nazivni nominal *	20		
	nadpritisak u usis./povrat. vod suction/ return line overpressure	max 5		
	potpritisak u usis./povrat. vod suction/ return line subpressure	max 0,5		
	područje podešavanja pressure setting range	7 do 35		
Broj obrtaja (min ⁻¹) Speed range (rpm)	min **	1000		
	nominal	2800		
	max	3600		
Radna tečnost Working fluid	viskozitet (mm ² /s) viscosity	teško gorivo 4 ... 800 heavy oil burner		
	temperatura (°C) temperature	-20 ... +140		

 * Pritisak na koji je podešen ventil - fabrički
 Pressure on the valve in factory regulated

 ** Za niže vrednosti upitati
 Lower speed - on the require

UGRADNI CRTEŽ (mere u mm)
MOUNTING DRAWING (dimensions in mm)


① Otvor za grejač/ Heater port Pg9 DIN 40430

② Klin/ Key A4x40x20 JUS M.C2.060

Oznaka/ Designation	A	B	C	D	E	L
3115.885 ...						90
3115.887 ...	M 22x1,5	M 22x1,5	M 22x1,5	Ø12g6	Ø54e9	96
3115.888 ...						100
3115.889 ...						105