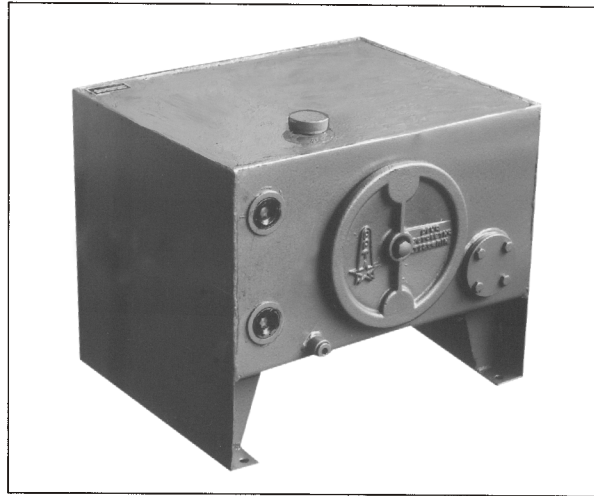


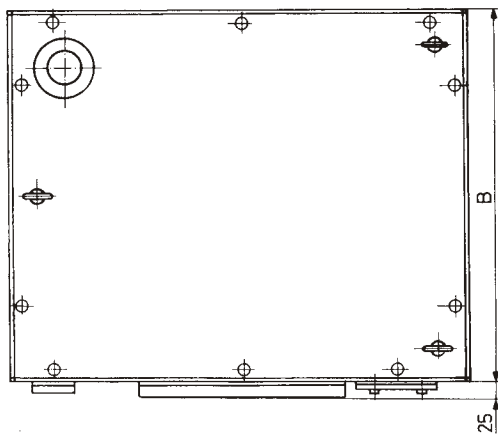
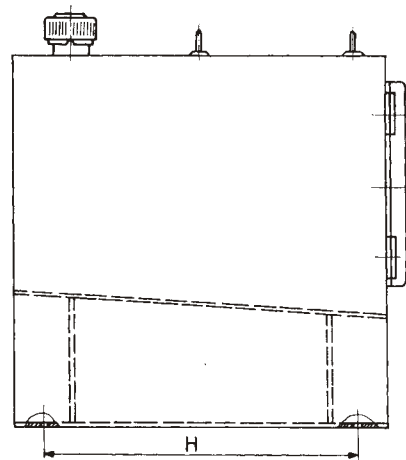
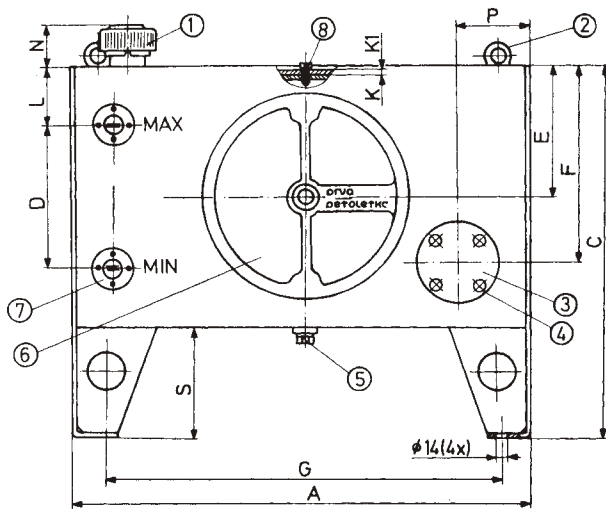
Rezervoar je osnovni element svakog pogonskog agregata sa višestrukom ulogom: smeštaj radne tečnosti, odvođenje toplote, izdvajanje vazduha, taloženje nečistoće. Može poslužiti i za nošenje pogonskih i upravljačkih uređaja. Urađen je od čeličnog lima. Opremljen je nalivnim filtrom sa oduškom, pokazivačem max nivoa i čepom za ispuštanje ulja, zatvaračem otvora za čišćenje i poklopcem otvora za ručnu pumpu. Poklopac rezervoara je predviđen za skidanje radi obrade i montaže nosećih uređaja (pumpni agregat ili upravljački uređaj) a pričvršćen je vijcima.

Reservoir is basic element of hydraulic power unit. Although primarily functioning as a point of storage and supply for hydraulic system fluid, reservoir also assists in the separation of air and contaminants from the fluid and helps dissipate heat generated within the system. Frequently it is used as an integral part of the complete hydraulic power package, forming the base on which the el. motor/pump assembly, and associated valves are mounted. The reservoir is made of a steel plate. It is provided with filling filter with breather, oil level gauge and drainage plug. A separate top cover fixed with bolts is forseen to carry el. motor/pump assembly and control components.


**TEHNIČKE KARAKTERISTIKE**  
**TECHNICAL DATA**

Oznaka Designation	6948681	7430390	7431216
Simbol Symbol			
Položaj ugradnje Mounting position	horizontalni horizontal		
Nazivna zapremina Nominal volume (l)	63	125	250
Korisna zapremina Effective volume (l)	50	115	180
Masa Mass (kg)			

**UGRADNI CRTEŽ** (mere u mm)  
**MOUNTING DRAWING** (dimensions in mm)



- ① Nalivni filter sa oduškom  
Filling filter with breather
- ② Vijak M8 (3x)  
Bolt M8 (3x)
- ③ Poklopac priрубnice za ručnu pumpu  
Cover for hand pump mounting
- ④ Vijak M10 (4x)  
Bolt M10 (4x)
- ⑤ Čep M22x1,5  
plug M22x1,5
- ⑥ Zatvarač otvora za čišćenje  
Access door
- ⑦ Pokazivač nivoa  
Level gauge
- ⑧ Vijak M6 (za NV 63); M8 (za NV 125,250)  
Bolt M6 (za NV 63); M8 (za NV 125,250)

Nazivna zapremina Nominal volume (l)	A	B	C	D	E	F	G	H	L	N	K	K1	P
63	615	500	500	180	180	260	535	460	80	60	8	5	100
125	825	540	600	250	225	340	745	500	80	60	8	5	100
250	1010	650	670	285	260	400	930	610	80	60	10	5	100