

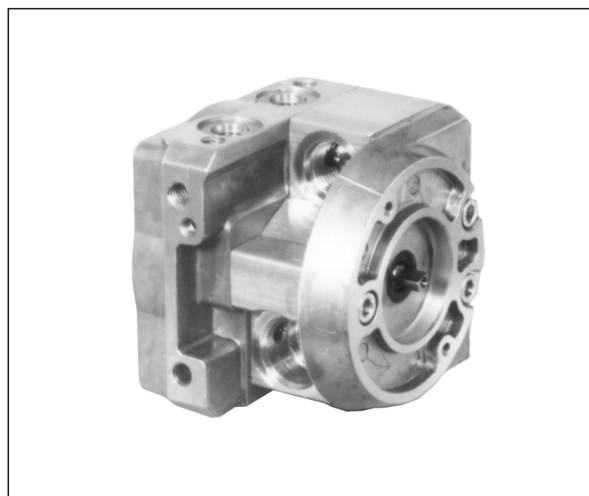
prva desetletka
HYDRAULICS

Mini zupčaste pumpe 3115-specijal

Mini gear pumps 3115-special

VISOKOG PRITISKA, SA SPOLJAŠNJIM OZUBLJENJEM
HIGH PRESSURE, WITH OUTER GEARING

- Visok zapreminski stepen korisnog dejstva
- Kućište izrađeno od presovanog aluminijuma
- Zupčanici imaju šesnaest zubaca što smanjuje na minimum pulzacije protoka i buku
- DU ležaji obezbeđuju visok pritisak
- Specijalno profilisane zaptivke zaptivaju zonu visokog pritiska
- Prednji i zadnji poklopci izrađeni od Al-liva pod pritiskom
- Simering zaptivka u prednjem poklopcu zaptiva pogonsko vratilo
- Mogućnost ugradnje ventila po sistemu uvrtanja u kućište
- Serijska proizvodnja sa strogom kontrolom kvaliteta



- High volumetric efficiency
- Extruded aluminum body
- The gears have 16 teeth and this keeps both flow pulsation and noise emission to a minimum
- DU bearings ensure high pressure capability
- Special seals boundary of the high pressure zone
- Die cast Al-front and rear covers
- The drive shaft protrudes from the front cover where it is sealed by the shaft seal
- Cartridge valves can be mounted (built in)
- Serial production with accurate control of quality

TEHNIČKE KARAKTERISTIKE

TECHNICAL DATA

OPŠTE
GENERAL

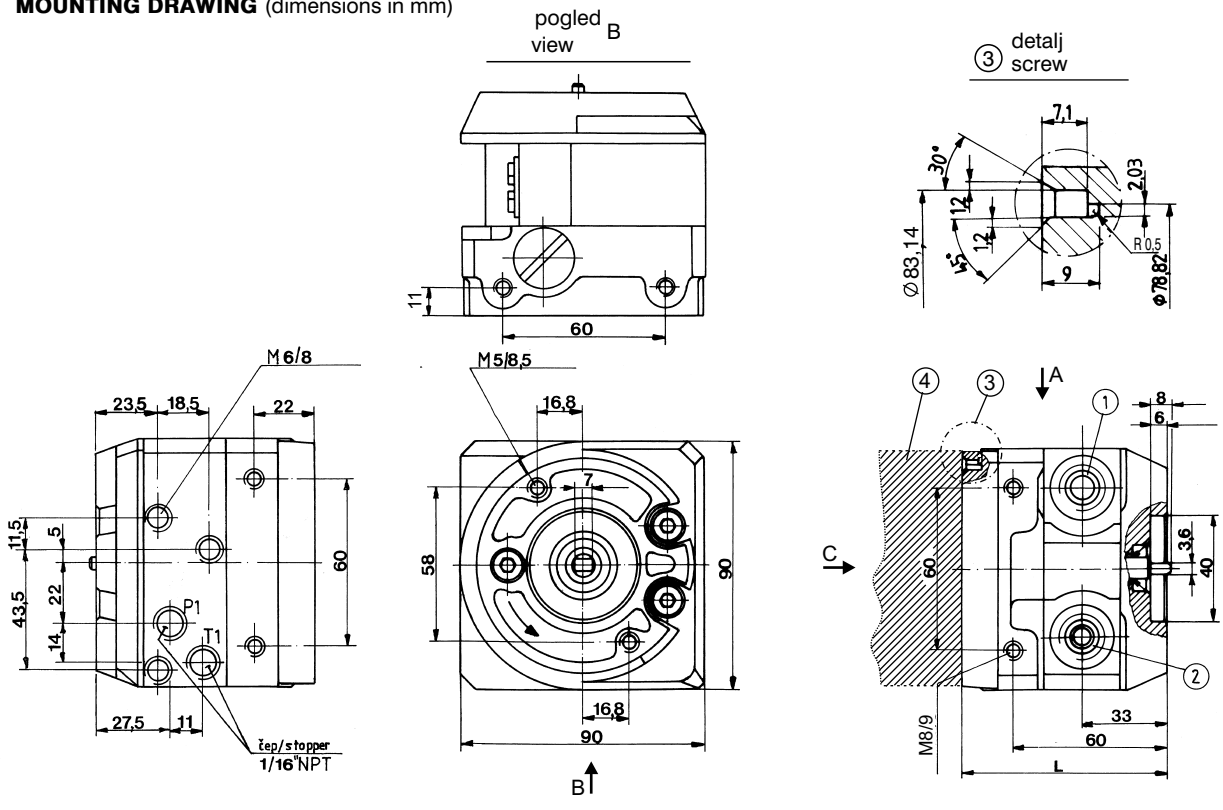
Oznaka Designation	videti na ugradnom crtežu see mounting drawing
Simbol Symbol	
Smer obrtanja Rotation direction	levi ili desni anticlockwise or clockwise
Položaj ugradnje Mounting position	proizvoljan optional
Način pogona Drive mode	obrotnim momentom (radijalne i aksijalne sile nisu dozvoljene) with torque (radial and axial forces not permissible)
Temperatura okoline (°C) Ambient temperature	-20 ... +40

HIDRAULIČKE
HYDRAULIC

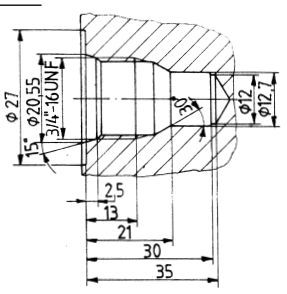
Radna zapremina Displacement (cm ³)	0,25	0,45	0,76	1,20	2,00
Pritisak (bar) Pressure	nominal	180			
	max	200			
Broj obrtaja (min ⁻¹) Speed (rpm)	min	750			
	nominal	1500			
	max	5000			
Finoća filtriranja (µm) Filtering fineness	usisni vod suction line	150			
	potisni vod pressure line	25			
Radna tečnost Working fluid	mineralno ulje mineral oil				
	viskozitet (mm ² /s) viscosity	16 ... 90			
	temperatura (°C) temperature	-20 ... +80			

A

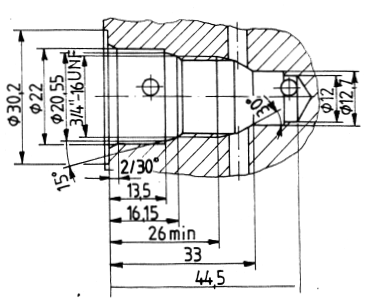
UGRADNI CRTEŽ (mere u mm)
MOUNTING DRAWING (dimensions in mm)



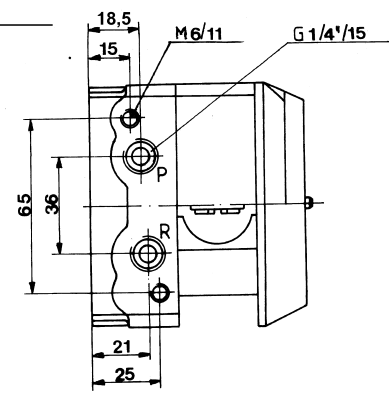
1 za uvrtnje ventila 3/4—16UNF
 for cartridge valves



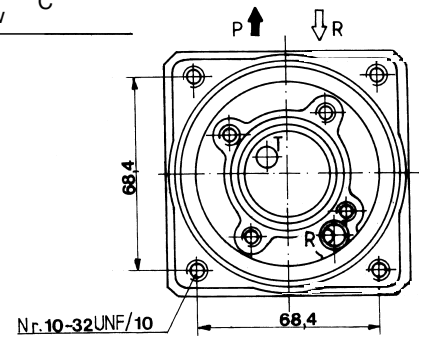
2 za uvrtnje ventila 3/4—16UNF
 for cartridge valves



pogled A
 view A



pogled C
 view C



4 rezervoar
 tank

oznaka designation		rad.zapremina displacement (cm ³)	L (mm)	masa mass (kg)
levi / anticlockwise	desni / clockwise			
	3115.491.97	0,25	80	1,5
	3115.493.97	0,45	81,12	
	3115.901.97	0,76	83,5	
	3115.902.97	1,20	86,5	
	3115.903.97	2,00	92	