

prva petoletka
HYDRAULICS

Pogonski agregati 1HAV Hydraulic power units 1 HAV

KONSTRUKCIJA SA ZAVARENIM REZERVOAROM I ZUPČASTOM PUMPOM
DESIGN WITH WELDED RESERVOIR AND GEAR PUMP

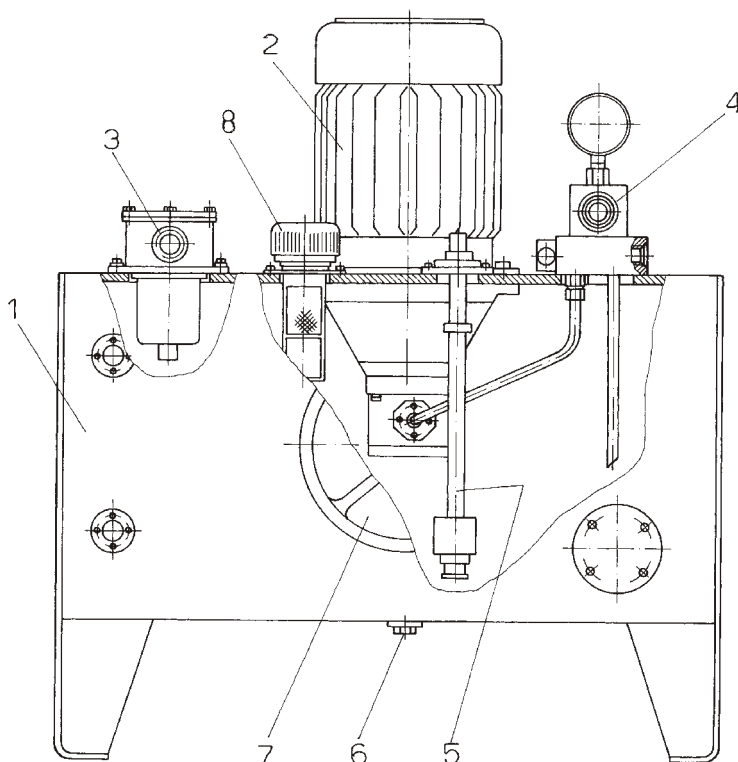
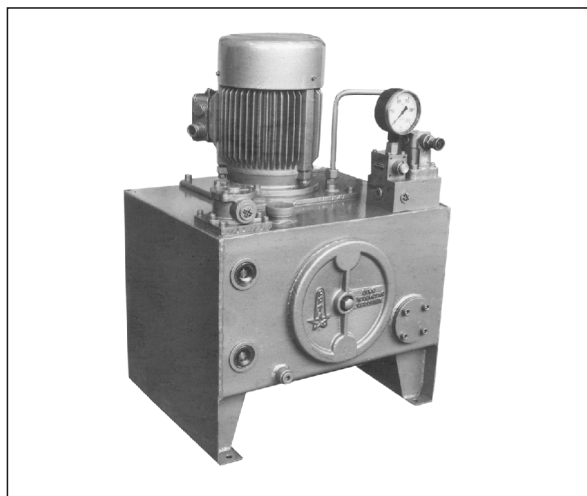
● **Pogodnosti:**

- kompaktna konstrukcija
 - više priključnih otvora za istovremenu vezu sa više izvršnih uređaja
 - laka i jednostavna zamenljivost komponenata
 - jednostavno održavanje
- **Mogućnost dogradnje:** akumulatora, hladnjaka, ručne pumpe itd.

● **Advantages:**

- compact design
- several ports for simultaneous connection to several actuators
- easy replaceability of the hydraulic components
- simple maintenance

- **At customer request, power unit can be supplied with:** hydraulic accumulator, cooler, hand pump etc.

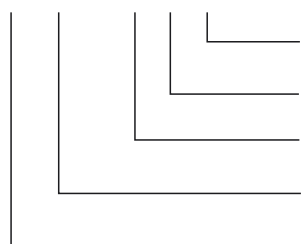


1. Rezervoar od čel. lima sa zavarenim poklopcem
2. Sklop: el. motor + spojnica + pumpa
3. Povratni filter
4. Ventilski blok
5. Pokazivač nivoa ulja
6. Čep za ispušt ulja
7. Otvor za čišćenje rezervoara
8. Nalivni filter sa oduškom

1. Steel plate reservoir with welded cover
2. El. motor/pump assembly
3. Return filter
4. Pressure control block
5. Oil level gauge
6. Oil drain plug
7. Reservoir cleaning hole
8. Filling filter with breather

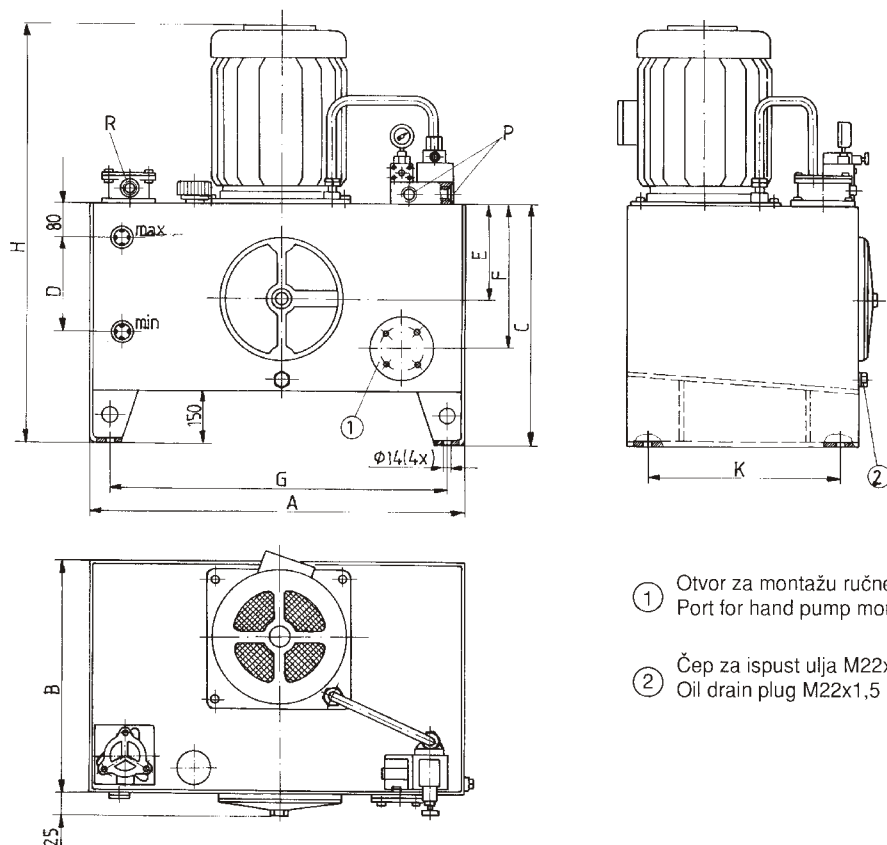
TEHNIČKE KARAKTERISTIKE
TECHNICAL DATA

Simbol Symbol		
Rezervoar Reservoir	nazivna zapremina nominal volume (l)	63; 125; 250
	korisna zapremina effective volume (l)	42; 80; 170
Pumpa (zupčasta) Pump (gear)	protok flow rate (l/min)	6,3 ... 160
	broj obtaja (min ⁻¹) speed (r.p.m.)	1500
	nazivni pritisak (bar) nominal pressure	63; 100; 160
El. motor	snaga power (kW)	2,2 ... 22
	broj obtaja (min ⁻¹) speed (r.p.m.)	1500
	napon voltage (V); 50 Hz	220 / 380
	izolacija - zaštita insulation - protection	class E - IP44
	oblik form	B14 sa većom prirubnicom B14 with larger flange
Ventil za ograničenje pritiska - podešavanje Relief valve - adjustment	(bar)	1,15 x nazivni pritisak 1,15 x nominal pressure
Radna tečnost Working fluid	mineralno ulje mineral oil	
	viskozitet viscosity (mm ² /s)	16 ... 510
	temperatura temperature (°C)	-20 ... +70
Masa Mass (kg)		videti ugradni crtež see mounting drawing

OZNAČAVANJE
DESIGNATION
1HAV. * * . * E *


El. motor snaga
 El. motor power
 Izolacija
 Insulation
 Pritisak
 Pressure
 Protok
 Flow rate
 Rezervoar - korisna zapremina
 Reservoir - effective volume

UGRADNI CRTEŽ (mere u mm)
MOUNTING DRAWING (dimensions in mm)



① Otvor za montažu ručne pumpe
 Port for hand pump mounting

② Čep za ispušt ulja M22x1,5
 Oil drain plug M22x1,5

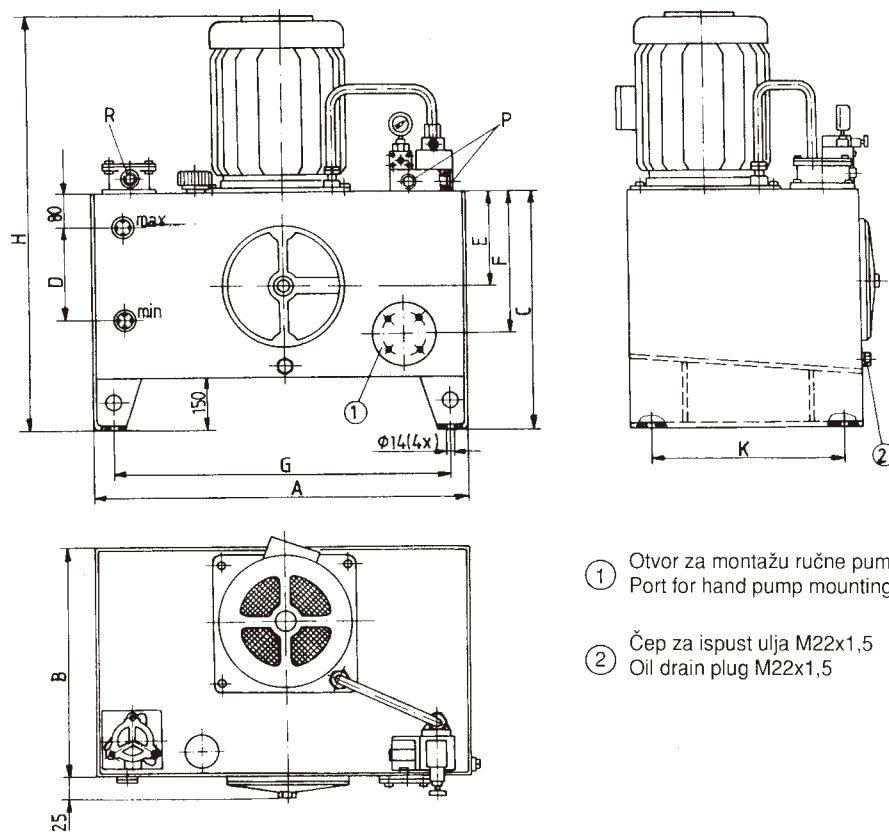
Rezervoar / Reservoir 63 /

Oznaka Designation	Protok Flow (l/min)	Snaga Power (kW)	Pritisak Pressure (bar)	A	B	C	D	E	F	G	K	H	P	R	Masa Mass (kg)																				
1HAV.63.16.63.E2,2	16	2,2	63	615	500	500	180	180	260	535	460	825	M22x1,5	M33x2																					
1HAV.63.20.63.E2,2	20	2,2										825																							
1HAV.63.25.63.E3	25	3										825																							
1HAV.63.10.100.E2,2	10	2,2	100									615			500	500	180	180	260	535	460	825	M22x1,5	M33x2											
1HAV.63.16.100.E3	16	3																				825													
1HAV.63.20.100.E4	20	4																				845													
1HAV.63.25.100.E5,5	25	5,5	160																			615			500	500	180	180	260	535	460	877	M22x1,5	M33x2	
1HAV.63.6,3.160.E2,2	6,3	2,2																														820			
1HAV.63.10.160.E3	10	3																														825			
1HAV.63.16.160.E4	16	4	160	615	500	500	180	180	260	535	460		845	M22x1,5																		M33x2			
1HAV.63.20.160.E5,5	20	5,5											877																						

Rezervoar / Reservoir 125 /

Oznaka Designation	Protok Flow (l/min)	Snaga Power (kW)	Pritisak Pressure (bar)	A	B	C	D	E	F	G	K	H	P	R	Masa Mass (kg)																		
1HAV.125.25.63.E3	25	3	63	825	540	600	250	225	340	745	500	925	M22x1,5	M48x2																			
1HAV.125.40.63.E5,5	40	5,5										982																					
1HAV.125.63.63.E7,5	63	7,5										1020																					
1HAV.125.80.63.E11	80	11	100									825	540		600	250	225	340	745	500	1096	M33x2	M48x2										
1HAV.125.20.100.E4	20	4																			945												
1HAV.125.25.100.E5,5	25	5,5																			977												
1HAV.125.40.100.E7,5	40	7,5	160																		825	540		600	250	225	340	745	500	1020	M22x1,5	M48x2	
1HAV.125.63.100.E11	63	11																												1096			
1HAV.125.20.160.E5,5	20	5,5																												977			
1HAV.125.25.160.E7,5	25	7,5	160	825	540	600	250	225	340	745	500			1015																M22x1,5	M48x2		
1HAV.125.40.160.E11	40	11												1105																			

UGRADNI CRTEŽ (mere u mm)
MOUNTING DRAWING (dimensions in mm)



Rezervoar / Reservoir 250 /

Oznaka Designation	Protok Flow (l/min)	Snaga Power (kW)	Pritisak Pressure (bar)	A	B	C	D	E	F	G	K	H	P	R	Masa Mass (kg)																				
1HAV.250.80.63.E11	80	11	63	1010	650	670	285	260	400	930	610	1166	M33x2	M48x2																					
1HAV.250.100.63.E11	100	11										1166																							
1HAV.250.125.63.E15	125	15										1220																							
1HAV.250.160.63.E18,5	160	18,5										1248																							
1HAV.250.63.100.E11	63	11	100									1010	650			670	285	260	400	930	610	1166	M22x1,5	M48x2											
1HAV.250.80.100.E15	80	15																				1210													
1HAV.250.100.100.E18,5	100	18,5																				1240													
1HAV.250.125.100.E22	125	22																				1286													
1HAV.250.40.160.E11	40	11	160																			1010	650			670	285	260	400	930	610	1175	M22x1,5	M48x2	
1HAV.250.63.160.E18,5	63	18,5																														1240			
1HAV.250.80.160.E22	80	22																														1277			